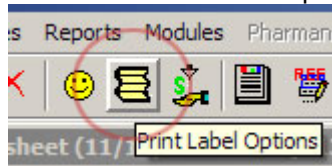


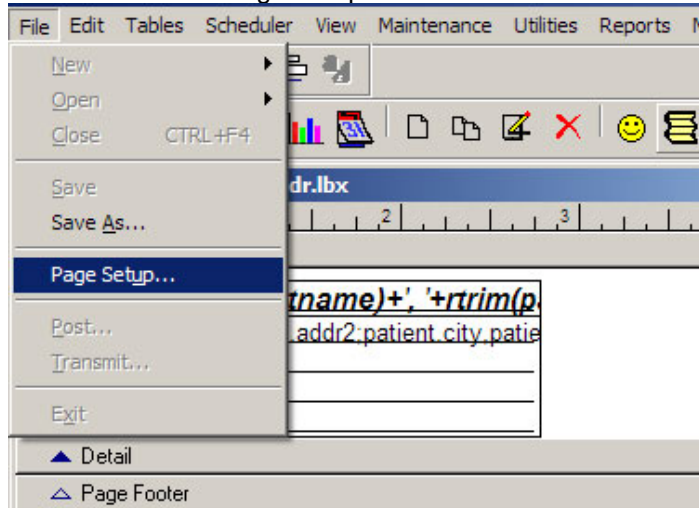
## Setting Up Labels in SmartSeries

1. Click on 'Print Label Options' icon



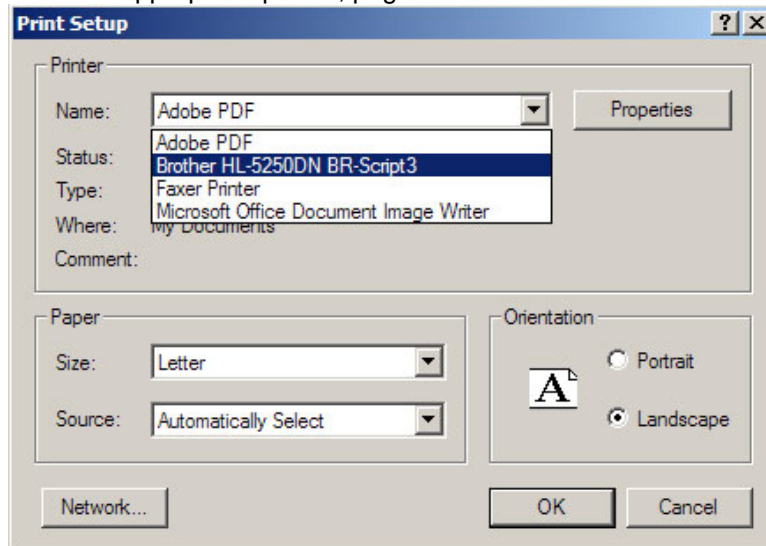
2. Click 'Edit Label Form' for the label you want to set up

3. Click 'File' and 'Page Setup...'



4. Click 'Print Setup...'

5. Select appropriate printer, page size and orientation for the label form



6. Click 'OK' and 'OK', close label form, and click 'Yes' to save changes

